

Corn snake

Vertebrate - has a backbone

Reptile - is cold blooded, has dry scaly skin, lungs and females lay eggs



Habitat

They live in meadows, fields and woodland.



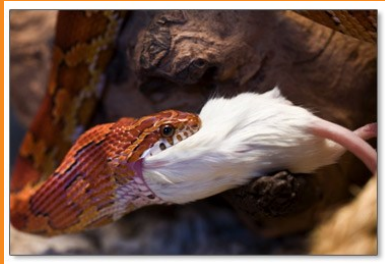
Where



Diet

CARNIVORE

They eat small mammals (e.g. mice, rats and bats), lizards and small frogs.



Protection from predators

Their colours mimic those of the venomous Copperhead snake.



Behaviour

They are active during the day.

Diurnal

Interesting facts

Corn snakes are non-venomous constrictors. They strike (attack and seize) their prey and hold onto them whilst squeezing them tightly.



Snakes smell with their tongues. When they stick out their tongue it collects scents from the air around it. When the tongue goes back into the mouth the forks touches a special sensory organ called the Jacobson's organ on the roof of the mouth and tells the snake what it smells.

[Take the reptile quiz.](#)

[Make a yarn snake bookmark.](#)